



TAKEUCHI

TB2150R TB2150R V

Short tail excavator with monoblock or 2-piece-boom

The **TB2150R (V)** short-tail excavator, with a minimal swing radius, is suitable - despite its 16 tonnes - for working in the smallest of spaces. With its side-mounted arm, the TB2150R (V) offers excellent forward visibility.



- › 1st hydraulic circuit, with proportional control with 224 l/min High Flow
- › Available with rubber or steel crawlers. Crawlers can be interchanged at any time.
- › LED worklights for optimum illumination of working area
- › Available in 2 versions: TB2150R with monobloc boom and TB2150R V with 2-pc-boom.



For three hours, two days or a whole year - if you need it for your construction site, you can **buy and rent** your TB2150R (V) from us.



Huppenkothen added-value equipment:

There is additional equipment that everyone wants. You therefore get all as standard from Huppenkothen. This makes your excavator more effective, faster and more comfortable.

Put simply - added value.

HYDRAULICS

4 hydraulic auxiliary circuits, 3 of which have proportional control

Flow rates and pressure adjustable on the display

1st circuit: 3 memories, 2nd/4th circuit: 1 memory

1st hydraulic auxiliary circuit, with proportional control - max. 224 l/min

2nd hydraulic auxiliary circuit, with proportional control - max. 54,8 l/min

3rd hydraulic auxiliary circuit, for hydraulic quick change plate HUPPPlate H

4th hydraulic auxiliary circuit, with proportional control - max. 54,8 l/min

Detend Mode - breaker line continuous operation

Auto-Tank - depressurised return flow for breaker operation

Automatic pressure relief of control circuits when quick change plate is actuated

Hydraulic tank ventilation

Pilot-opened load-holding valve on boom cylinder and arm cylinder (TB2150R V: also 2-piece-boom)

End position damping at boom and arm cylinder



Exclusive additional equipment



Powerful



Minimum slewing radius



Adjustable powerhouse

CAB WITH COMFORT EQUIPMENT

Comfort cabin including roof guard ROPS (ISO12117-2) / OPG (ISO10262 Level II)

7" multifunction color display

Automatic temperature controlled air conditioning with 4 outlet nozzles and air-conditioned cup holder

Heating and radio with AUX & USB

Air suspension comfort seat with seat heating

HFM (HUPPFleetManagement) - telematics system with 2 year term of use, extended for additional charge

ECO mode - to increase economic efficiency

Automatic idle speed control - optimised fuel consumption

Sun shield

Rain guard

TECHNICAL AND SAFETY EQUIPMENT

Double air filter - additional protection for the engine

Boom with 2 lifting cylinders

Spring-loaded accumulator on parking brake

Spring-loaded accumulator on slew brake

Electric refuelling pump

Pressure accumulator for pressure relief of hydraulic circuits and emergency boom lowering

Storage compartment with on-board toolkit

Acoustic overload warning device (EN474-5)

Travel alarm

Rear view and side view camera - for more safety

LED worklights

TB2150R: 2 x cab at front, 1 x engine hood at front, 1 x boom

TB2150R V: 2 x cab at front, 1 x cab at rear, 1 x engine hood at front, 1 x boom

Socket on cab roof for rotary beacon

Optional additional equipment and services

HUPPLub

Huppenkothen central lubrication system to ensure everything runs even more smoothly.

/

HUPPView

Bucket position control system for precise work.

/

HUPPLevel

Automated levelling and planing.

/

HUPPIWarranty

Extended premium warranty package with all-round protection.

/

HUPPFleetManagement

An eye on every machine at all times with fleet management. First 2 years included in purchase price.



TECHNICAL DATA

Engine	DEUTZ TCD3.6L4 4-cylinder Commonrail diesel engine, turbocharger, 85 kW @ 2.200 rpm (ISO14396) Stage V emission level with DPF, SCR and DOC
Dimensions (mm)	TB2150R: 7.975 x 2.500 x 2.960 TB2150R V: 8.275 x 2.500 x 2.960
Digging depth (mm)	TB2150R: 5.500 / TB2150R V: 6.300
Reach (mm)	TB2150R: 8.330 / TB2150R V: 8.790
Arm length (mm)	2.320
Tail swing radius (mm)	1.700

MAIN DIMENSIONS

Service weight* (kg)	TB2150R: 16.200 TB2150R V: 16.860
Total width (mm)	2.500
Overall height (mm)	2.960
Transport length - dozer blade at the rear (mm)	TB2150R: 7.975 TB2150R V: 8.275

* Machine weight + SWPL + PL + medium size bucket + half a tank of diesel

CHASSIS

Tracks	Rubber
Track width (mm)	500
Ground contact (mm)	3.080
Ground pressure (kg/cm ²)	TB2150R: 0,454 TB2150R V: 0,473
Ground clearance (mm)	475
Dozer blade dimensions (mm)	2.490 x 550

WORK PERFORMANCE

Travel speed (km/h)	2,9 (1 st gear) / 5,5 (2 nd gear)
Slew speed (rpm)	11
Gradeability (degrees / %)	35 / 70
Digging force bucket (kN)	96,3
Digging force arm (kN)	65,4

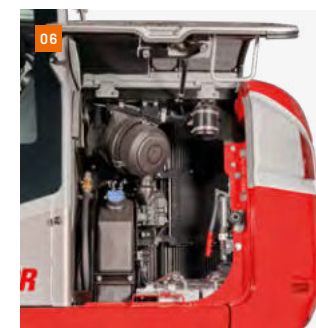
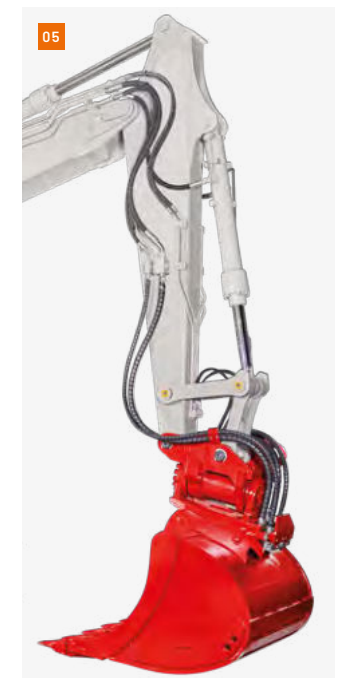
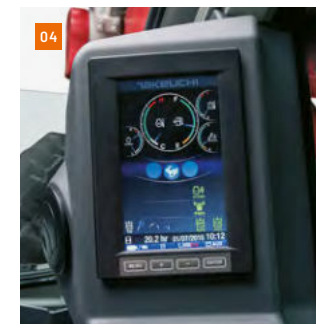
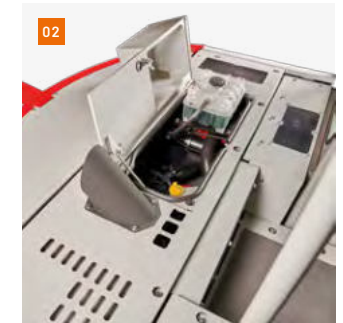
HYDRAULIC SYSTEM

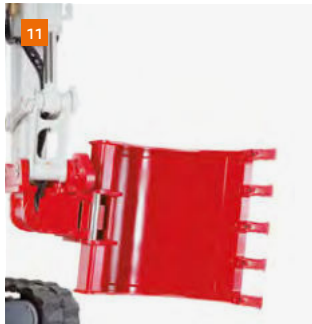
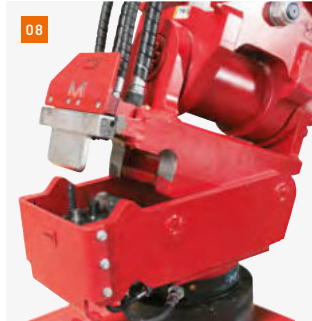
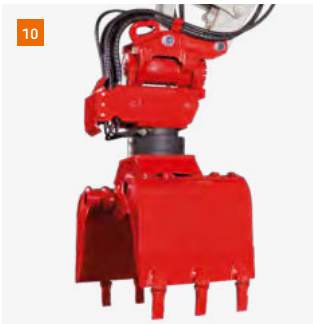
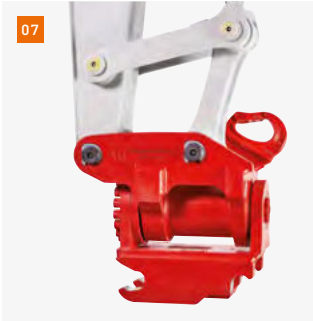
Hydraulic pumps	2 x variable axial piston pump + 2 x gear pump
Pump pressure (bar)	343 x 343 x 236 x 39
Flow rate (l/min)	112 x 112 x 54,8 x 20
Hydraulic tank (l)	102 (Tank) / 235 (total)
Slew motor type	Axial piston motor, rigid
Travel motor type	Axial piston motor, variable

AUXILIARY CONTROL CIRCUITS

1 st hydraulic breaker control circuit (l/min)	224
3 memories for flow rates and pressure	
2 nd /4 th Powertilt/grab control circuit (l/min)	54,8
1 memory for flow rates and pressure	

- 01 Sound-damped, low-vibration comfort cab with air suspension comfort seat with seat heating.
- 02 Modified maintenance hatch for best accessibility to coolant reservoir and engine oil filler neck.
- 03 Generous maintenance hatches for service-friendly access to hydraulic and fuel maintenance components.
- 04 Optimally arranged controls with large, clear and user-friendly display with rear and side view camera overlay.
- 05 4 hydraulic circuits as standard, 3 of which have proportional control; adjustable flow rates and pressure.
- 06 Generous maintenance hatch guarantees optimum accessibility to the battery and radiator cleaning.





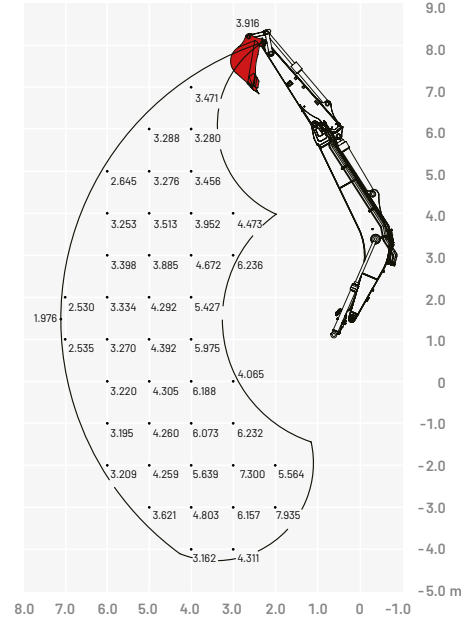
- 07 HUPPTilt R tilt-rotator with HUPPPlate H
- 08 HUPPQuick system: Hydraulic connections are connected automatically during the quick coupling process.
- 09 HUPPBreak hydraulic breaker 903 with HUPPQuick
- 10 HUPPGrip universal grabber with HUPPTilt and HUPPQuick quick coupling system
- 11 HUPPTilt with HUPPPlate H, digging bucket mounted as high bucket
- 12 Concrete buster - Epiroc CB950
- 13 Add-on compactor - Ammann APA75/74
- 14 Drum Cutter - Erkat ER600



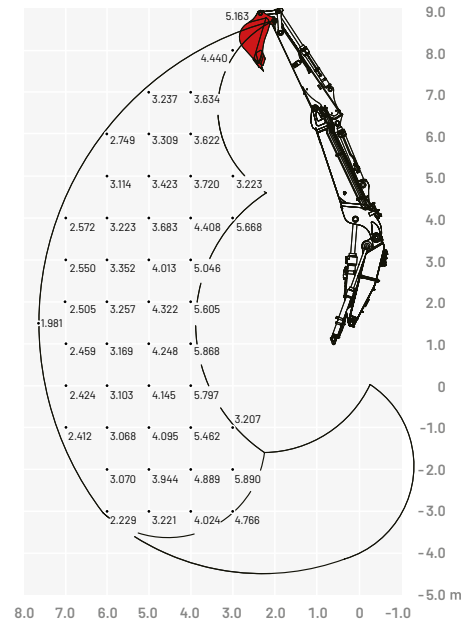
More accessories at
[huppenkothen.com/
 excavator-accessories](http://huppenkothen.com/excavator-accessories)

Lifting load (kg)

Monoblock (forward, upper dozer blade)

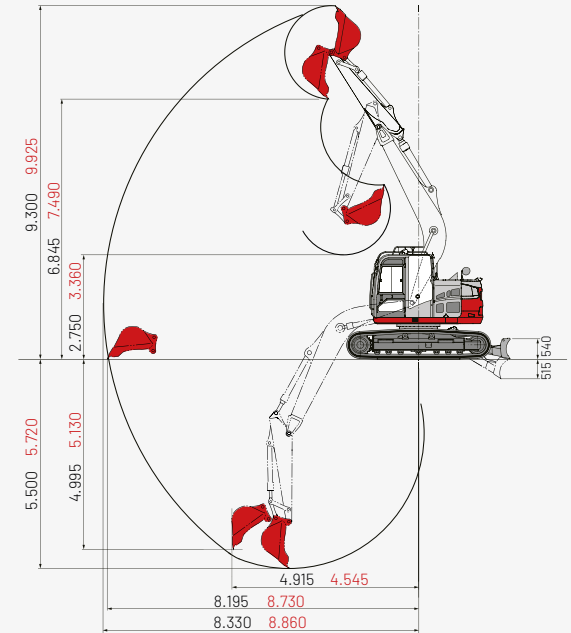
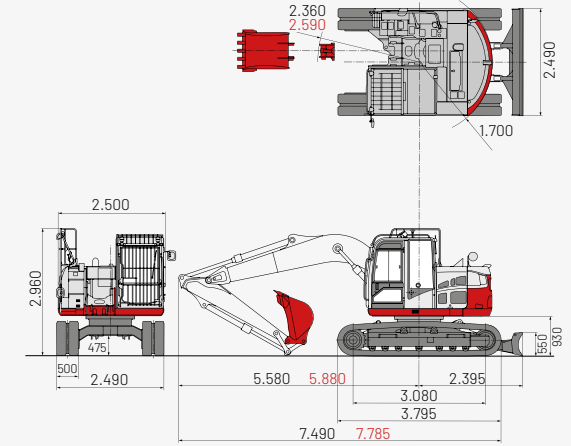


2-piece-boom (forward, upper dozer blade)



Dimensions (mm)

Black: monoblock and 2-piece-boom
Red: alternative dimensions 2-piece-boom



The loads in the diagrams (on the left) are within 87% of the hydraulic lifting load and within 75% of the tipping load.

Huppenkothen – your construction site, your partner, your success!

If you're looking to buy or rent a construction machine, if quality is important to you and you have no time to lose, then you've come to the right place with Huppenkothen. We provide all you need for your construction site. If you have any questions:

We are always available.

41
Locations

350
Employees

4.500+
Machines

100 %
Service

AUSTRIA (AT)

/

Huppenkothen GmbH

Bundesstraße 117 / 6923 Lauterach
T +43 50 663 400 / F +43 5574 778 24
info@huppenkothen.com

SWITZERLAND (CH)

/

Huppenkothen Baumaschinen AG

Hinterwiden / 9245 Oberbüren
T +41 71 944 18 11 / F +41 71 944 18 69
oberbueren@huppenkothen.com

SOUTH-TIROL (IT)

/

Huppenkothen GmbH / SRL

Peter-Anich-Straße 1 / 39011 Lana (BZ)
T +39 0473 491 170 / F +39 0473 491 171
lana@huppenkothen.com

SLOVENIA (SVN)

/

Huppenkothen d.o.o.

Slovenčeva ulica 97, 1113 Ljubljana
T +386 15 300 333 / F +386 15 300 344
ljubljana@huppenkothen.com

The complete
Huppenkothen
product range

